

Business Processes and their Context

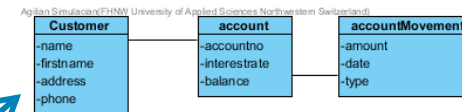
Knut Hinkelmann



References in BPMN

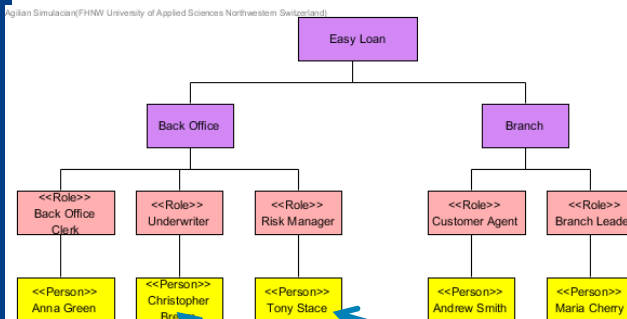
- Process models represent the flow of work.
- Processes are related to other aspects of business
- These are represented by references to other models.

An element in a process map corresponds to a process diagramm

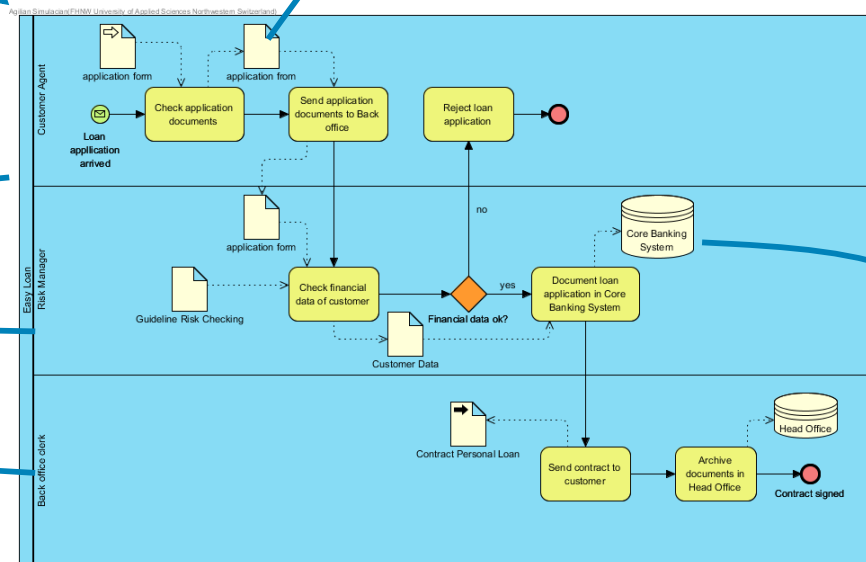


Data Objects can refer to

- data models
- document models



Lanes refer to elements in an organisation model



Data stores may refer to IT models



Relationships from and to Business Process Diagrams

There are two kinds of relations from/to BPMN

- Relations **to** process **models as a whole**
 - ◆ Process maps
 - ◆ Business motivations
- Relations **from** process model elements to **elements** in other models
 - ◆ data objects in document models and data models
 - ◆ organisation units in organisation models
 - ◆ applications and application services in IT models
 - ◆ business rules

References in BPMN

- Artifacts in BPMN stand for data objects
 - ◆ Data object in BPMN can represent different kinds of data
 - structured data
 - documents
 - ◆ Data store (applications)
- Lanes and pools represent organisational elements
 - ◆ organisation units
 - ◆ roles
 - ◆ people

Data and organisation are modeled in their own models; their elements can be referenced from BPMN